

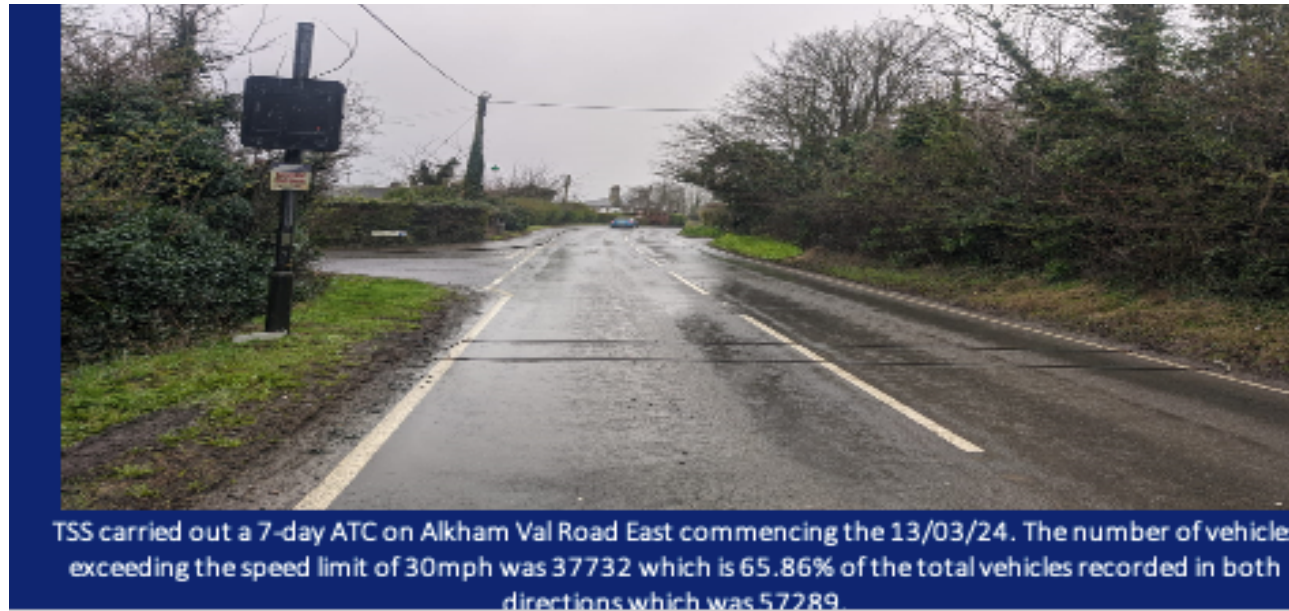
ATC Traffic Analysis Report Summary

Author: Transport Survey Systems
 Contract: Kent County Council

Start Date: 13.03.2024
 End Date: 19.03.2024

Eastern End

Sensors placed just east of Short lane adjacent to flashing speed sign



	Exiting Village		Entering Village		Total Movements	
Total Number of Vehicles	24960		32329		57289	
Average speed over 7 days	34.52	mph	31.08	mph	32.50	mph
85 percentile speeds	39.2	mph	36.9	mph	0	0.00
Vehicles complying with the 30mph speed limit	15.09%	3767	48.84%	15790	34.14%	19557
Vehicles over enforcement threshold of 35mph	46.92%	11710	22.34%	7221	33.04%	18931
Peak flow	423 vehicles per hour		612 vehicles per hour		850 vehicles per hour	
Maximum speed	76.1	mph	71.4	mph	76.1	mph

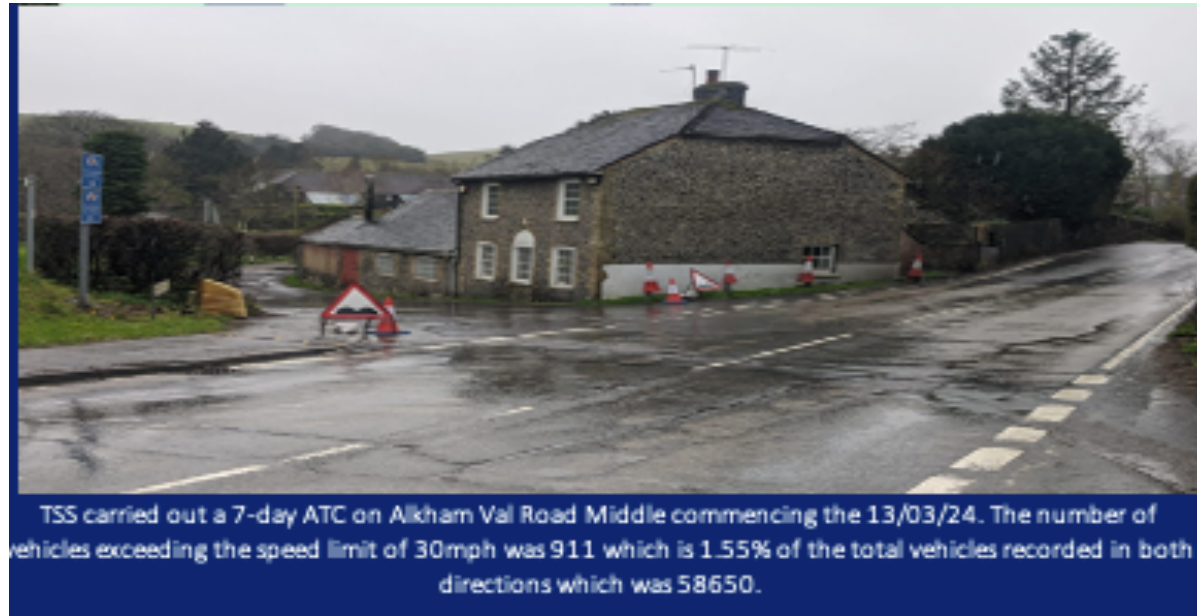
ATC Traffic Analysis Report Summary

Author: Transport Survey Systems
 Contract: Kent County Council

Start Date: 13.03.2024
 End Date: 19.03.2024

Village Centre

Sensors placed from eastern edge of Hogbrook lane to western edge of Slip lane



	Eastbound		Westbound		Total Movements	
Total Number of Vehicles	25553		33097		58650	
Average speed over 7 days	23.2	mph	21.9	mph	22.5	mph
85 percentile speeds	26.7	mph	25.4	mph		
Vehicles complying with the 30mph speed limit	97%	24872	99%	32867	98%	57741
Vehicles over enforcement threshold of 35mph	0%	53	0%	14	0%	65
Peak flow	432 vehicles per hour		616 vehicles per hour		866 vehicles per hour	

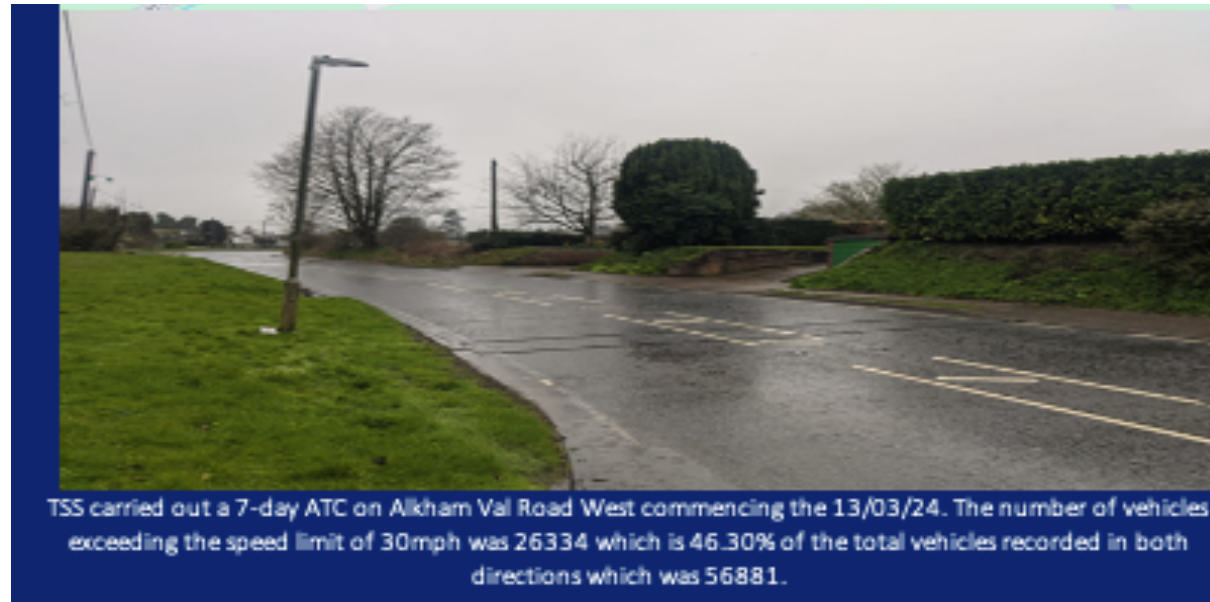
ATC Traffic Analysis Report Summary

Author: Transport Survey Systems
 Contract: Kent County Council

Start Date: 13.03.2024
 End Date: 19.03.2024

Western End

Sensors placed west of
 Newlyn's Medow junction



	Entering Village		Exiting Village		Total Movements	
Total Number of Vehicles	24845		32036		56881	
Average speed over 7 days	30.5	mph	30.0	mph	31.1mph	mph
85 percentile speeds	35.0	mph	34.0	mph		
Vehicles complying with the 30mph speed limit	52%	12870	55%	17684	54%	30545
Vehicles over enforcement threshold of 35mph	15%	3752	11%	3588	13%	7343
Peak flow	435 vehicles per hour		613 vehicles per hour		852 vehicles per hour	
Maximum speed	60.9	mph	66.97	mph	66.97	mph

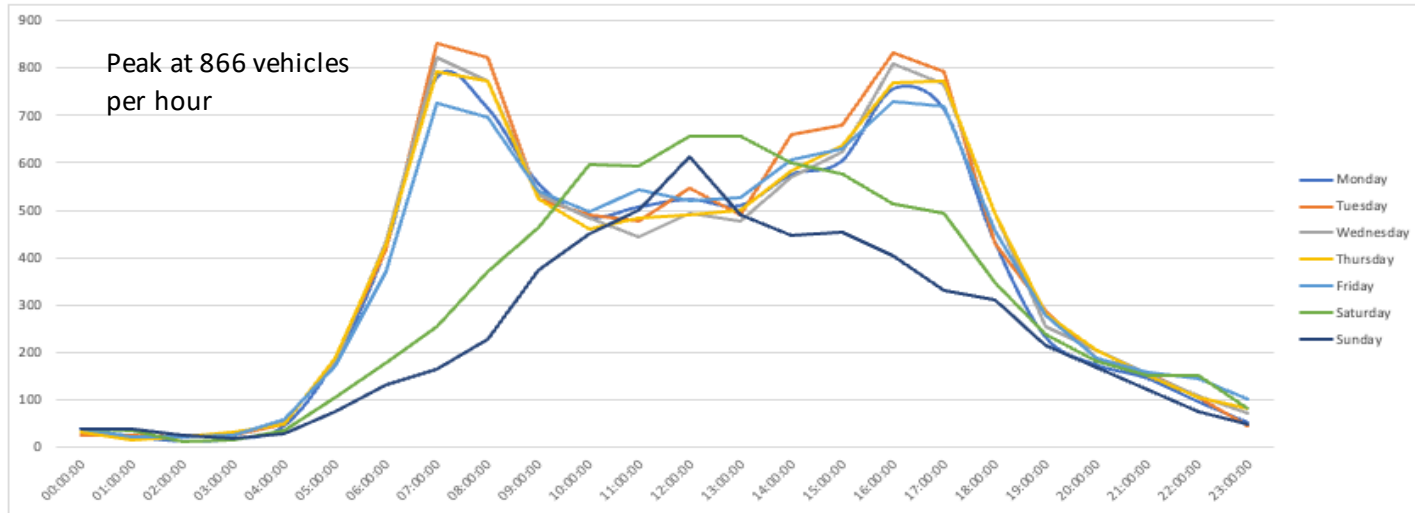
ATC Traffic Analysis Report Summary

Author: Transport Survey Systems
 Contract: Kent County Council

Start Date: 13.03.2024
 End Date: 19.03.2024

Traffic Volumes

(data from Eastern end of Village)



Vehicle Type Breakdown

(data from Eastern end of Village)

Total of Two Axle Truck or Bus (Class 3 vehicles)		1726		2767		4493
Vehicles over enforcement threshold of 35mph	33.6%	580	16.6%	460	23.1%	1040
Total of Vehicles with 3 or more axles (Class 4-12) >7.5 ton		204		0		423
Vehicles over enforcement threshold of 35mph	5.4%	11	19.3%	39	11.8%	50
Total of Motorbikes (Class 14)		138		160		298
Vehicles over enforcement threshold of 35mph	52.9%	73	19.4%	31	34.9%	104
	Maximum speed	72.5 mph		54.29 mph		72.5 mph
Total of Bicycles (Class 15)		6		4		10